



CEVAHİR

**GROWTH IS NEVER BY CHANCE,
IT IS THE RESULT OF FORCES WORKING**

CEVAHIR

ABOUT US

Cevahir is a constantly growing company which operates in many industries including finance, mining and security; with the main focus on construction, tourism and business.

The company started its businesses in the construction sector by the founder and the present chairman Ibrahim Cevahir. With the vision of growth by development, development by growth, the Cevahir Limited Partnership was formed in 1967. As a group company, construction and contracting activities were exhibited in various developments and infrastructure areas such as schools, hospitals, water & sewerage networks, and bridges. Project obligations have been successfully completed and the company has gained national confidence and international reputation. Thanks to gained success, the Libya Construction and Trade Consortium was established in 1975 and the company expanded abroad. After the success of the Company in Libya in 1978, Cevahirler İnşaat ve Taahhüt Limited company was established to start construction and contracting works in Saudi Arabia which led to many successful projects.

With the accumulated experience of the company, work completion ability and with its wide capacity, it started to finance and develop its own projects in 1990. In addition to mainly tourism-oriented project developments, the company continued to prove their success in new sectors. It started to operate in the fields of tourism and hotel management with the 'The Plaza Hotel', which was an investment completed in 1995. Apart from these, the company has taken its place in the service sector with its commercial and office investments, and in the mining sector with its investment in perlite production facility. It has become one of the leading companies in Turkey with worldwide recognition by realizing all phases of a project including operations and marketing. With our mission aiming to break new grounds, we have successfully completed many firsts as a company, from the biggest shopping and indoor entertainment center of its time in Europe, to the largest ballroom and convention hotel in Turkey, and the highest towers in Macedonia. With a total construction area of 280,000 square meters, our investment in Macedonia has become the largest private sector investment from Turkey in the Balkan region.

Cevahir is an exemplary company above world standards who is reliable, up to date and brave. In its project designs Cevahir aims to be in accordance with the spirit of the location and continue its activities by putting people at the center of its business.



IBRAHİM CEVAHIR
OUR FOUNDER AND HONORARY PRESIDENT
1933 Trabzon – September 22, 2015 Istanbul

BOARD OF DIRECTORS



Yusuf Cevahir
Chairman of the
Board



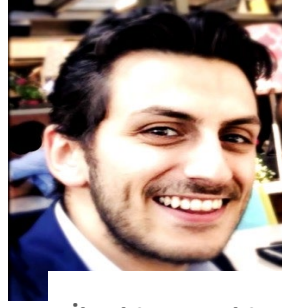
Hamit Cevahir
Vice Chairman of
the Board



Eser Cevahir
Board Member



**Muhammed
Cevahir**
Board Member



İbrahim Cevahir
Board Member



**Şeyma Ayşe
Cevahir**
Board Member



DON'T LIMIT YOURSELF.

MANY PEOPLE LIMIT THEMSELVES TO WHAT THEY THINK THEY CAN DO. YOU CAN GO AS FAR AS YOUR MIND LETS YOU. REMEMBER, YOU CAN ACHIEVE WHAT YOU BELIEVE. EVERY SINGLE JOB IS A CHALLENGE, DOING THE BEST AT THIS MOMENT PUTS YOU IN THE BEST PLACE FOR THE NEXT ONE.

**INVESTMENTS
IN TÜRKİYE**

ISTANBUL CEVAHIR SHOPPING MALL

Completed in 2005 with a total construction area of 425,000m² over 10 floors and a capacity of 500,000 visitors, Cevahir Shopping Mall was the largest shopping Mall of Turkey and Europe, and was the 3rd largest shopping mall in the World.

In addition to providing easy access to the Istanbul Metro, the shopping center's amenities also include:

- More than 360 shops, 34 fast food units, 14 restaurants
- 22,000m² entertainment area, including a large roller coaster, many rides, arcade and children's play area
- 9,000m² movie complex including 13 movie theatres and a theatre hall belonging to the Istanbul State Theatres
- A parking complex with a capacity of 3,000 vehicles
- 60m² elevating hydraulic stage reaching a height of 25 meters which can be watched from all floors
- The world's largest clock
- 2,500m² glass roof
- Two 15 meter waterfalls



LOCATION
ŞİŞLİ, İSTANBUL

SCOPE
SHOPPING
MALL

TOTAL AREA
425,000m²

**DATE OF
COMPLETION**
OCTOBER 2005





İSTİNYE MALL
CEVAHİR

İSTİNYE MALL
CEVAHİR





12

McDonald's

P&G

HELETTÄÄN KÄSIÄSI
KÄSIÄSI KÄSIÄSI
KÄSIÄSI KÄSIÄSI

BIJUTTOHTYÖN
ALUEEN
ALUEEN

LAJIN KEVÄLLÄ VAIN MIEHÄN ENNEN OPEEN

TRABZON CEVAHIR OUTLET

A mixed-use facility which consists of a 33,000m² shopping outlet, with 10,000m² of additional outlet space planned for further expansion, and an 8,000m² office block.

The facility serves both for the residents of Trabzon and visitors from neighboring cities in the Black Sea Region.



LOCATION
YOMRA, TRABZON

SCOPE
SHOPPING
OUTLET
AND OFFICE
BLOCK

TOTAL AREA
51,000m²

**DATE OF
COMPLETION**
MAY 2011

KOTON OUTLET

YIKKI OUTLET

TRABZON
CEVAHİR OUTLET



- 1. KAT**
- | | |
|--------------------------|------------------------------|
| 2.01 KILAS | 2.34 BİREK |
| 2.02 ALPTEPELİ ALIŞVERİŞ | 2.35 TOSKAN |
| 2.03 BİREK | 2.36 ALIŞVERİŞ |
| 2.04 KOTON OUTLET | 2.37 KOTON KİMYA AKSESUARLAR |
| 2.05 KOTON OUTLET | 2.38 FİRENGİ & BİREKİSİ |
| 2.06 İPEK YILDIZ | 2.39 YILDIZ FİRENGİ |
| 2.07 LUTRANCI | 2.40 FİRENGİ |

2. KAT

- | | |
|-------------------|----------------------------|
| BURSAK KİME | TATILAN ÇAYIRI & HİPPISTİK |
| LIFE DÖNEM | MAYAL DÖNEM & DÜNYALIK |
| TOSKAN | TOSKAN |
| BURSAK DÖNEM | BATIM DÖNEMİ |
| BAKURİYER FİRENGİ | BAKURİYER FİRENGİ |
| TRICOLLE | TRICOLLE |

3. KAT

- | | |
|------------------|---------------|
| PUR | LUTRANCI |
| PERNALLI TOSKAN | FİRENGİ |
| BAKURİYER DÖNEM | BURSAK |
| BATIM OUTLET | BURSAK |
| ALIŞVERİŞ | BAKURİYER |
| BAKURİYER OUTLET | 1 & 2. OUTLET |

LET



WAIKIKI







CEVAHİR KAHVE

BEYMEN
BUSINESS

50
İNDİRİM

K&T

GRAND CEVAHIR HOTEL CONVENTION CENTER

The 5-star luxurious Grand Cevahir Hotel Convention Center was the first and largest convention hotel in Turkey and provides 324 rooms including 4 presidential suites, 7 executive corner suites, 4 non-smoking suites, 36 corner suites, 269 standard rooms and 3 rooms adapted for the disabled.

The Grand Cevahir Hotel Convention Center which contains Europe's largest congress hall, offers many services with its amenities which include:

- A fair ground of 10,000m²
- 2,500m² column free ballroom with 310m² stage and an 8.65 meters floor to ceiling height making it one of the largest in Europe
- Auditorium with a capacity of 1,013 guests
- 8 meeting rooms
- Indoor and outdoor swimming pools



LOCATION
ŞİŞLİ, İSTANBUL

SCOPE
CONGRESS HOTEL

TOTAL AREA
110,000m²

**NUMBER
OF ROOMS**
324

**DATE OF
COMPLETION**
MAY 2002















CEVAHIR HOTEL ASIA

A modern hotel with 198 rooms which offers an unparalleled Prince Islands view.

The hotel offers privileged and exclusive accommodation facilities, 8 prestigious meeting Rooms of up to 90m² and a ballroom of 650m² with a 560 person banquet seating capacity, making the hotel highly sought after for its wedding venues and facilities.

In addition to its outdoor swimming pool and modern fitness center, the hotel has an emphasis on its 1,350m² SPA Health Center which includes massage rooms, snow fountain, steam room, jacuzzi, sauna, Turkish bath and indoor swimming pool.



LOCATION
MALTEPE,
ISTANBUL

SCOPE
HOTEL AND SPA

TOTAL AREA
21,000m²

**NUMBER
OF ROOMS**
198

**DATE OF
COMPLETION**
OCTOBER 2013



CİVAHİR HOTEL







THE PLAZA HOTEL

Located in central Istanbul, this 5-star hotel provides guests the opportunity to live the metropolitan life in the most comfortable way, with its ideal location near the main roads, banks, hospitals, shopping and art centers.

The hotel has 235 rooms that include 6 king rooms, 2 honeymoon suites, 44 club rooms, 16 junior suites, 2 rooms with disabled facilities, 22 executive rooms, 142 standard rooms and 1 apartment room.

In addition to its 12 meeting rooms, sports & recreational facilities and restaurants, the hotel has stunning views of the Bosphorus.



LOCATION
BALMUMCU,
ISTANBUL

SCOPE
HOTEL AND
BUSINESS CENTER

TOTAL AREA
26,000m²

**NUMBER
OF ROOMS**
235

**DATE
OF COMPLETION**
APRIL 1995







CEVAHIR SULTANAHMET HOTEL

Located in the historical and prime touristic area of Sultanahmet, this 36 room boutique hotel is within a few minutes walking distance from Istanbul's landmarks including Topkapı Palace, the Blue Mosque, the Hagia Sophia and much more.

With its neoclassical architecture suiting the nature of its surroundings, the hotel gives guests the chance to experience the nostalgia of centuries.



LOCATION
SULTANAHMET,
ISTANBUL

SCOPE
HOTEL

TOTAL AREA
4,000m²

**NUMBER
OF ROOMS**
36

**DATE OF
COMPLETION**
SEPTEMBER 2004



TARABYA ÇAMLICA VILLAS

Completed in 1992, this is a 60,000m2 residential complex located in one of Istanbul's most luxurious residential areas, Tarabya.

The complex consists of 110 triplex villas in which residents can benefit from a secluded lifestyle and many shared facilities including swimming pools.



LOCATION
TARABYA,
ISTANBUL

SCOPE
VILLAS

TOTAL AREA
60,000M2

**NUMBER
OF UNITS**
110

**DATE OF
COMPLETION**
MAY 1992



CEVAHİR ŞİŞLİ OFFICE BUILDING

A 15-floor office block built to provide exclusive facilities and Grade A office spaces in the heart of Istanbul's busy financial district, Şişli.



LOCATION
ŞİŞLİ,
İSTANBUL

SCOPE
OFFICE

TOTAL AREA
6,000M2

**NUMBER
OF FLOORS**
15

**DATE OF
COMPLETION**
MARCH 2006

CEVAHIR RESIDENTIAL COMPLEX AND MERTER BUSINESS CENTER

A residential and business complex of 36,500m², consisting of 9 apartment blocks and 2 commercial buildings with 8,500m² Grade A office space. This complex is located in Merter, the textile center of Istanbul.



LOCATION
MERTER,
ISTANBUL

SCOPE
OFFICE AND
RESIDENTIAL
COMPLEX

TOTAL AREA
45,000M²

**NUMBER
OF UNITS**
11

**DATE OF
COMPLETION**
MAY 1996



SUCCESSFUL BUSINESS, LIKE LIFE, IS A SERIES OF CONCENTRIC CIRCLES. YOU START IN THE MIDDLE AND KEEP MOVING OUT, INTERCONNECTING CIRCLE AFTER INTERCONNECTING CIRCLE, EXPANDING YOUR WORLD, YOUR VIEWS AND YOUR JOY.

**INVESTMENTS
ABROAD**

drone video1

drone video2

CEVAHIR SKY CITY

A huge architectural structure in Skopje, Macedonia which overlooks the city with a magnificent view of Vodno Mountain and the city. The project is the first of its kind in the Balkans.

Cevahir Sky City nests the tallest buildings in the Balkans: 4 towers with 40 floor and a shopping mall.



MACEDONIA

LOCATION

SKOPJE,
MACEDONIA

SCOPE

RESIDENTIAL TOWERS
AND SHOPPING MALL
COMPLEX

TOTAL AREA

280,000M²

NUMBER OF APARTMENTS

1376





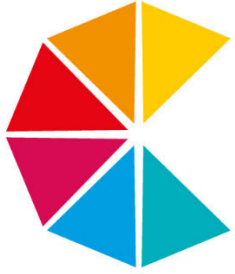


CEVAHIR MALL
SKOPJE | MAKEDONIA









CEVAHIR MALL

ÜSKÜP | MAKEDONYA





dm Info

БЕСПЛАТЕН ПРИМЕРЕК ИЛИ АКТИВНАТА АКЦИСКА ПОНУДА!



-15% НА АПСОЛУТНО СЕ!



ВЪЗВРАЩА СЕКИ ПАТРОНЪТ



sinsay

TRENDS

ПЕРОБИ

НИ ДОКАТ



FUTURE PROJECTS

CEVAHIR

CEVAHIR SUN CITY

Located on Vodno Mountain, covering a total area of 835,000m², this project will be carried out over a number of phases.

The first phase will be the first of its kind in Macedonia and will consist of detached and semidetached houses, villas, duplexes and apartment blocks providing a total residential development of 25,000m².



MACEDONIA

LOCATION
SKOPJE,
MACEDONIA

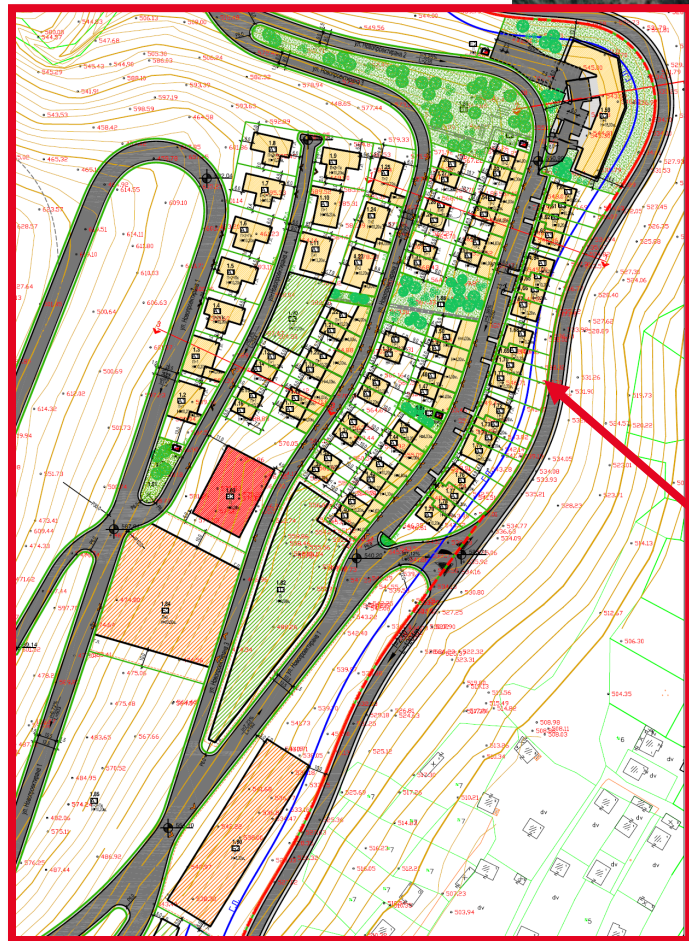
SCOPE
NEW SUBURBAN
AREA

TOTAL AREA
25,000M²

**NUMBER OF
UNITS**
151

**CONSTRUCTION
COMMENCE**
PENDING





PHASE 1 PLAN

SCOPE
NEW SUBURBAN
AREA

**TOTAL
CONSTRUCTION
AREA**
25,000M2

**NUMBER OF
UNITS**
151

**CEVAHIR DAMAN
MALL BENGHAZI**



LIBYA

LOCATION
BENGHAZI,
LIBYA

SCOPE
SHOPPING MALL

TOTAL AREA
100,000M2

STATUS
PENDING

CEVAHİR DAMAN





IT IS NOT THE BEAUTY OF A BUILDING, BUT THE CONSTRUCTION
OF THE FOUNDATION THAT WILL STAND THE TEST OF TIME

**CONTRACTING
IN TÜRKİYE**

drone video

ISTANBUL INTERNATIONAL BUS TERMINAL

A terminal building with a capacity of 1 million passengers, this bus terminal was the largest bus terminal in Europe and the third largest in the world at the time of its completion.

The terminal is situated in the Bayrampaşa district and has 324 platforms with 500 permanent parking lots, more than 1,000 temporary parking lots as well as many offices, retail units and temporary accommodation units.



LOCATION
BAYRAMPAŞA,
ISTANBUL

SCOPE
INTERNATIONAL
BUS TERMINAL

TOTAL AREA
320,000M²

**NUMBER OF
PLATFORMS**
324

**DATE OF
COMPLETION**
JUNE 1996





CERRAHPAŞA MEDICAL FACULTY

Cerrahpaşa Medical Faculty is one of Turkey's most respected and well known medical centers.

The faculty has an open area of 120,000m² and a closed area of 210,000m² including 20 separate buildings facilitating the deanship, auditorium, dining hall, gymnasium, central library, basic sciences, polyclinic and accident & emergency.

The facility also accommodates various departments including Orthopedic, Neurosurgery, Infantile Disease, Gynecology, Gynecological Oncology, Neurology Physical Therapy, Nurse lodging, Radiation Oncology, Psychiatry, Health Service Vocational high school, Medicine Museum and Pulmonary Diseases.



LOCATION
CERRAHPAŞA,
ISTANBUL

SCOPE
MEDICAL FACULTY

TOTAL AREA
210,000M²

**DATE OF
COMPLETION**
DECEMBER 1994



ERCIS SUGAR PLANT

110,000m² complex located in the eastern region of Turkey, Van; which consists of social facilities, housing, roads and the factory itself.

LOCATION
ERCİS, VAN

SCOPE
SUGAR REFINERY
COMPLEX

TOTAL AREA
110,000m²

**DATE OF
COMPLETION**
JUNE 1991





GO AHEAD AND WORK ON YOUR GOALS, YOUR GOALS WILL GO TO WORK ON YOU. WHATEVER GOOD THINGS WE BUILD, THEY END UP BUILDING US.

**CONTRACTING
ABROAD**

JEDDAH CORNICHE COMMERCIAL CENTER

The Jeddah Corniche Commercial Center was Jeddah's first and largest shopping and commercial center at completion, becoming a popular place to visit for locals as well as expatriates.

This mixed-use development was once a symbol of Turkish construction in Saudi Arabia.



LOCATION
JEDDAH, SAUDI
ARABIA

SCOPE
RETAIL AND
OFFICES

TOTAL AREA
91,000m²

**DATE OF
COMPLETION**
APRIL 1984



CORNICHE COMMERCIAL CENTER

مرکز الكورنيش التجاري

JEDDAH / SARABA

RIO - CEVAHIR

ISTANBUL / TURKEY

ABBAR & ZAINY OFFICE BUILDING

The Abbar & Zainy office building was developed as a modern structure located in the coastal city of Jeddah, Saudi Arabia with a total floor area of 8,130m².



LOCATION
JEDDAH,
SAUDI ARABIA

SCOPE
OFFICE

TOTAL AREA
8,130m²

**DATE OF
COMPLETION**
SEPTEMBER 1984



Abbar & Zaidy

اببار و زیدی

MUSLIM WORLD LEAGUE COMPLEX

The Muslim World League Complex comprises the Headquarters, Library and Mosque with a total construction area of 90,000 m².



LOCATION
MECCA,
SAUDI ARABIA

SCOPE
COMPLEX

TOTAL AREA
90,000 m²

**DATE OF
COMPLETION**
1989

H.R.H PRINCE METEIB BIN ABDULAZIZ PALACE COMPLEX

The residential complex is located in the Saudi Arabian capital city, Riyadh. The 5,000m² residence consists of 5 buildings and is complemented with an open area of 25,000m².

The Sharbatly Commercial Building consists of 2 units providing a total area of 15,000m².



LOCATION
TAIF,
SAUDI ARABIA

SCOPE
PALACE COMPLEX

TOTAL AREA
33,500m²

**DATE OF
COMPLETION**
DECEMBER 1984





H.R.H PRINCE METEIB BIN ABDULAZIZ PALACE COMPLEX

A palace complex, located in the historic city of Taif on 250 acres of land. It is 1,600 meters above sea level and includes an assembly building, a guesthouse, a mosque, a semi olympic swimming pool and a water reservoir with a 500 ton capacity.



LOCATION
RIYADH,
SAUDI ARABIA

SCOPE
H.R.H'S
RESIDENTIAL COMPLEX

TOTAL AREA
30,000m²

NUMBER OF UNITS
5

**DATE OF
COMPLETION**
DECEMBER 1985

LOCATION
JEDDAH,
SAUDI ARABIA

SCOPE
COMMERCIAL CENTER

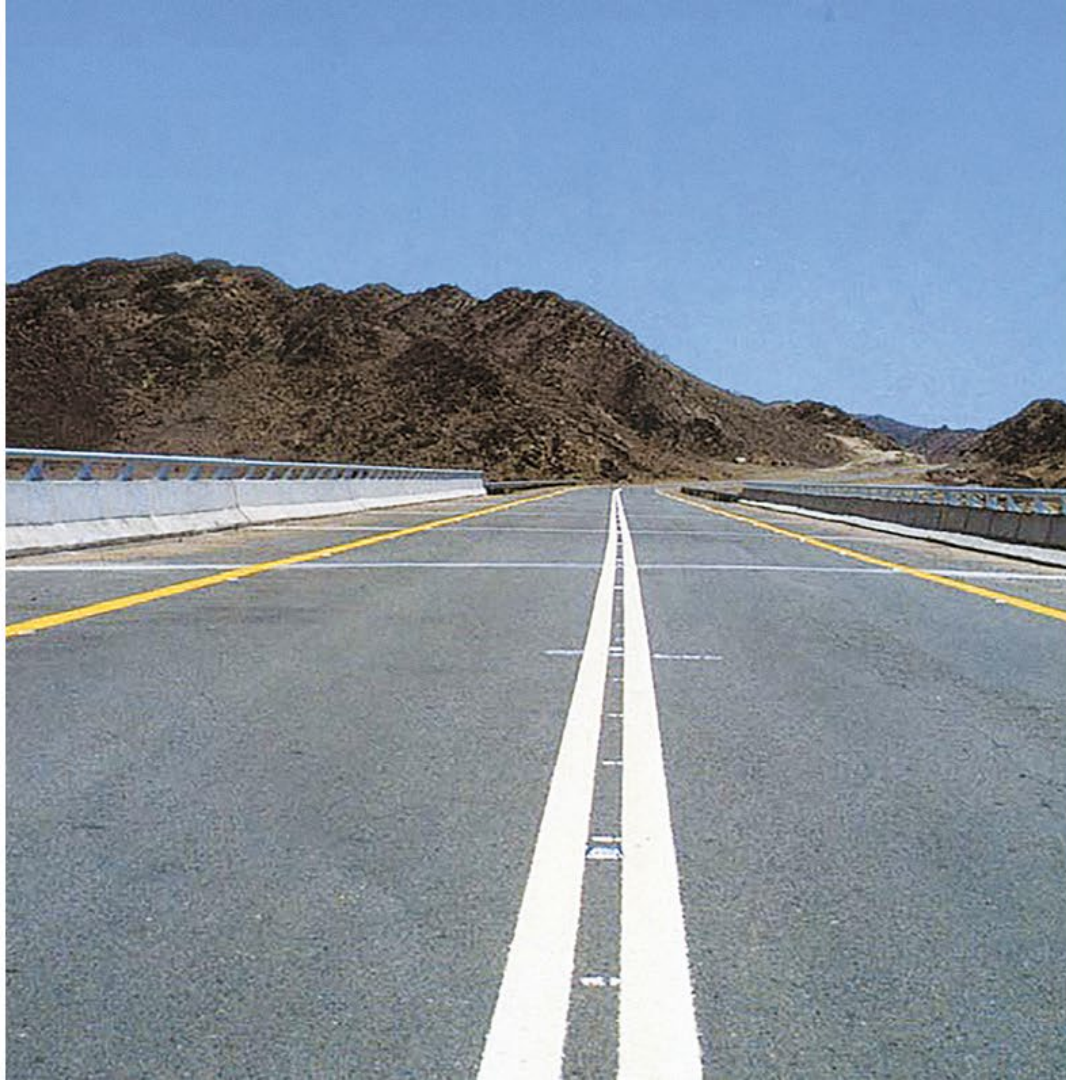
TOTAL AREA
15,000m²

NUMBER OF UNITS
2

**DATE OF
COMPLETION**
OCTOBER 1985



**HADASHAM
MADRAKA
ROAD**



LOCATION

JUMUM,
SAUDI ARABIA

SCOPE

25 BRIDGES, 260
CULVERTS AND 8
RETAINING WALLS

TOTAL LENGTH

85km

**DATE OF
COMPLETION**

FEBRUARY 1984

**KING
ABDULAZIZ
UNIVERSITY**



LOCATION
JEDDAH
AND MEDINA,
SAUDI ARABIA

SCOPE
UNIVERSITY

TOTAL AREA
18,500m²

**NUMBER OF
UNITS**
4

**DATE OF
COMPLETION**
DECEMBER 1985



**MAKKAH
SCHOOLS,
WATER TANKS
AND UMBRELLAS**



LOCATION
MAKKAH,
SAUDI ARABIA

SCOPE
SCHOOLS,
WATER TANKS
AND UMBRELLAS

TOTAL AREA
11,100m²

**NUMBER OF
UNITS**
3

**DATE OF
COMPLETION**
SEPTEMBER 1984



AL KIYSH HOUSING PROJECT

Built in the early 1980's, this was the largest housing project in the Libyan coastal city of Benghazi. The project consists of 752 residential apartments, providing a total area of 105,000m².



LOCATION
BENHAZI, LIBYA

SCOPE
HOUSING
PROJECT AND
INFRASTRUCTURE

TOTAL AREA
105,000m²

**NUMBER OF
APARTMENTS**
752

**DATE OF
COMPLETION**
OCTOBER 1982



NATIONAL COMMERCIAL BANK OF ZAWIA, HEADQUARTERS BUILDING

Constructed in the Libyan City of Zawia, this building provided the National Commercial Bank a modern office space of 7,214m².



LOCATION
ZAWIA, LIBYA

SCOPE
OFFICE

TOTAL AREA
7,214m²

**NUMBER OF
UNITS**
14

**DATE OF
COMPLETION**
OCTOBER 1986



LİBKO TURK
CONSTRUCTION CO.

**BENGAZI
BOARDING
SCHOOL**



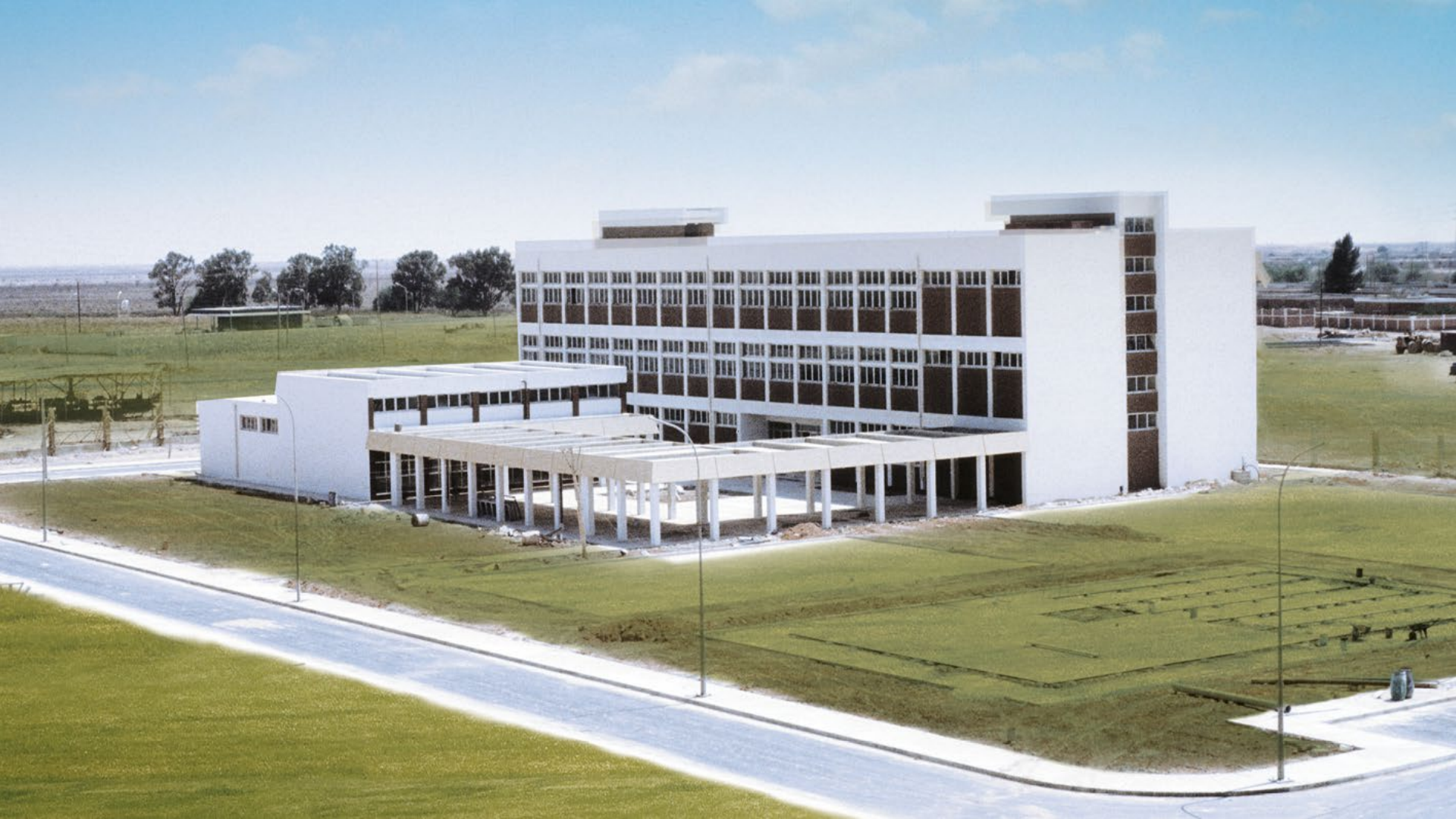
LOCATION
BENGAZI, LIBYA

SCOPE
BOARDING
SCHOOL

TOTAL AREA
28,200m²

**NUMBER OF
UNITS**
14

**DATE OF
COMPLETION**
JUNE 1984



**SURMAN
INSTITUTION OF
ELECTRICAL
ENGINEERING**



LOCATION
TRIPOLI, LIBYA

SCOPE
BUILDING AND
INFRASTRUCTURE

TOTAL AREA
22,000m²

**NUMBER OF
UNITS**
20

**DATE OF
COMPLETION**
DECEMBER 1983



THE GREATEST TREASURES OF MOTHER EARTH ARE ABOVE,
UNDER AND IN FRONT OF US. WE JUST NEED TO UTILISE THEM
WELL.

MINING

CEVAHIRLER MINING

Cevahir began operations in the mining sector in 2014 by supplying international markets with perlite from its privately owned mining sites with up to 25 million tons of reserves.

Perlite is a volcanic glassy rock which is used for varying purposes including construction, farming, agriculture, chemical substance carriage, filtration and more.

As well as a crushing and screening facility, Cevahirler Mining also operates its own expansion plant.



LOCATION
TURKEY

SCOPE
MINING
FACILITY

**START OF
OPERATIONS**
MAY 2014



A person is shown in profile, sitting at a desk in a control room. They are looking at several computer monitors that display various data and maps. The entire scene is overlaid with a semi-transparent red filter. The person is wearing a light-colored, short-sleeved shirt. The desk has a control panel with many buttons and a mouse. The background shows more monitors and equipment racks.

**WE ALL RUN IN HOPE OF FINDING
SOME SECURE GROUND**

SECURITY

CEVAHIR PRIVATE SECURITY

In November 2009, Cevahir Private Security was formed to provide customers high quality security services.

Since the beginning of operations, the company has continued to grow in this sector, by closely following the new advancements in technology, providing customers meaningful feedbacks and maintaining a high level of service quality.



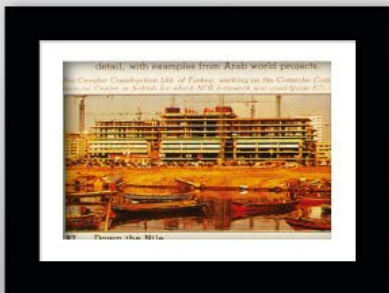
LOCATION
TURKEY

SCOPE
SECURITY

START OF OPERATIONS
NOVEMBER
2009







MUSIAD



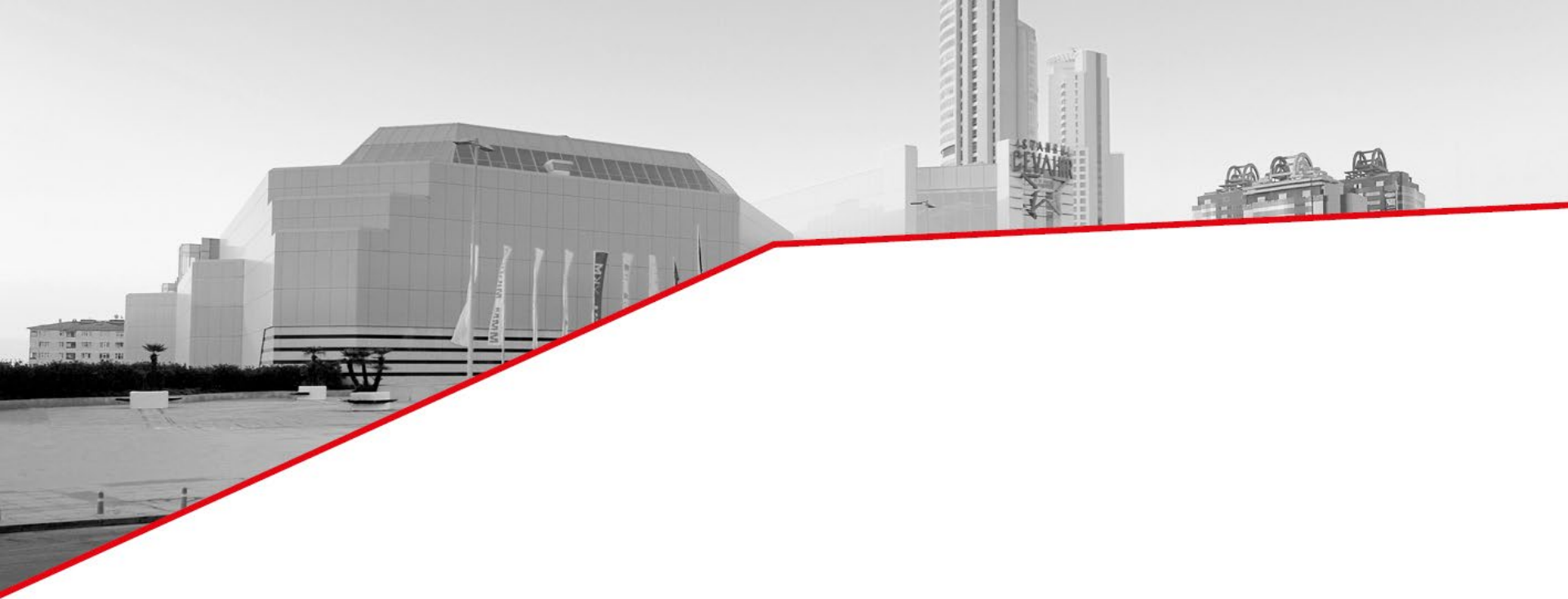
**İSTANBUL
TİCARET
ODASI** 1882



**İSTANBUL TİCARET
ÜNİVERSİTESİ**



MEMBERSHIPS & CSR



ISTANBUL

Tel: +90 (212) 320 86 76
Fax: +90 (212) 320 75 30
Address: Darülaceze Caddesi No: 29
34384 Okmeydanı - Sisli İstanbul, Türkiye
E-Mail: info@cevahir.com.tr
Web: www.cevahir.com.tr

TRABZON

Tel: +90 (462) 341 15 63
Fax: +90 (462) 341 15 65
Address: Kaşüstü Mahallesi
Devlet Karayolu Cad. No. 19 Yomra - Trabzon, Türkiye
E-Mail: info@trabzoncevahir.com.tr
Web: www.trabzoncevahir.com.tr

IZMIR

Tel: +90 (232) 669 11 10
Fax: +90 (232) 669 11 20
Address: Tavukçukuru Köyü Mevkii 101
Ada 39, Parsel Bergama - İzmir, Türkiye
E-Mail: info@cevahirperlite.com.tr
Web: www.cevahirperlite.com.tr

CEVAHIR USKUP / SKOPJE

Tel: +389 (2) 244 40 18
Fax: +389 (2) 321 32 31
Address: Blvd. Srbija 31A (Municipality Aerodrom)
(P.O. 711), 1000 Skopje, North Macedonia
E-Mail: sales@cevahirskycity.mk
Web: www.cevahirskycity.mk